
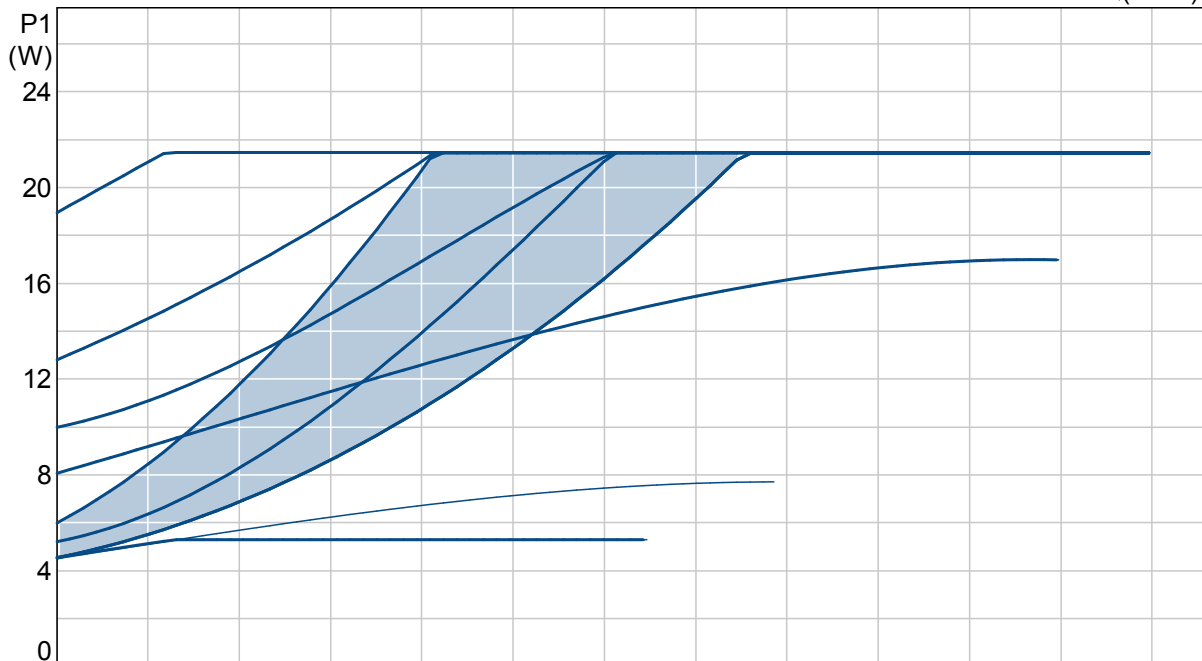
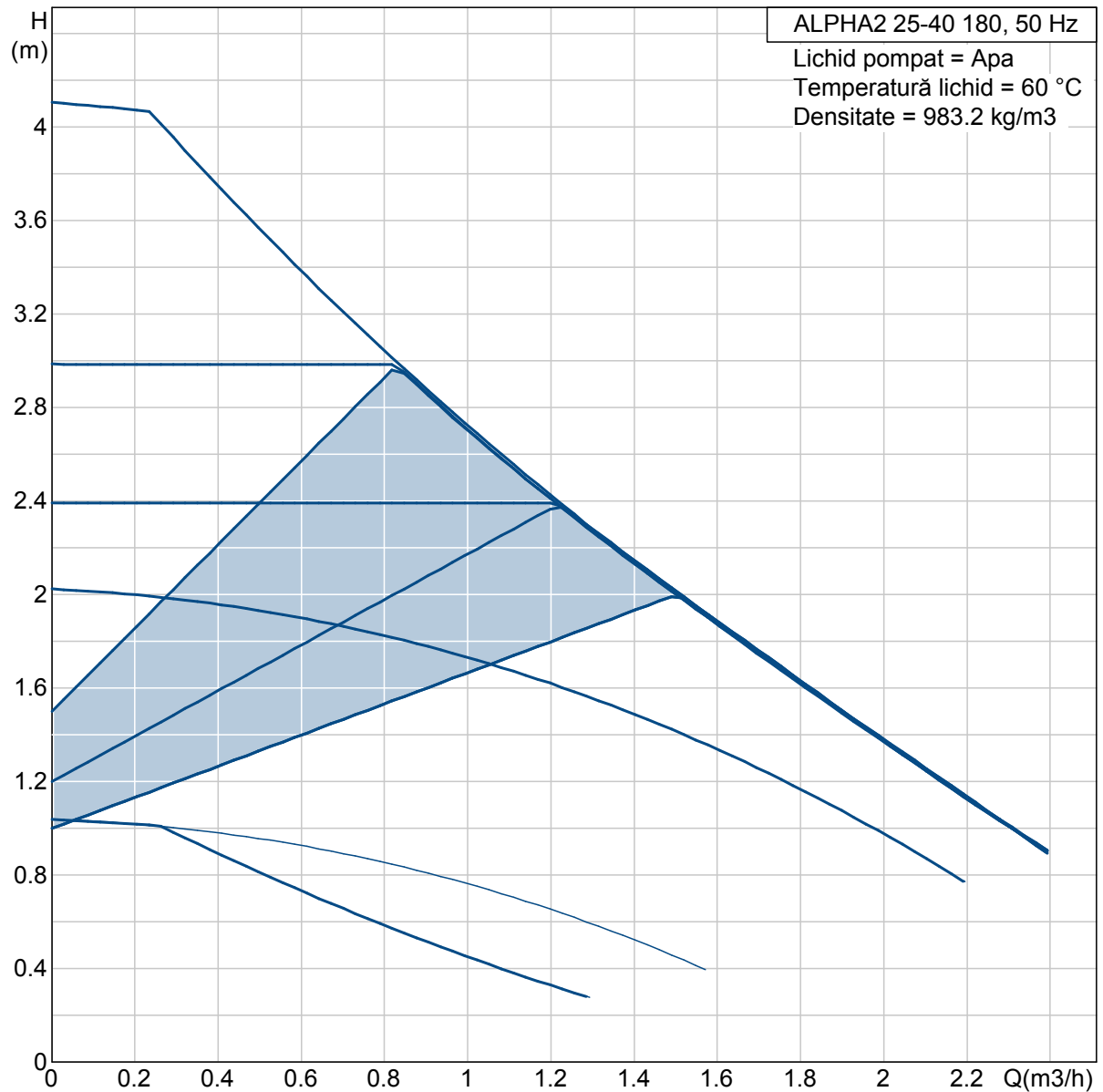


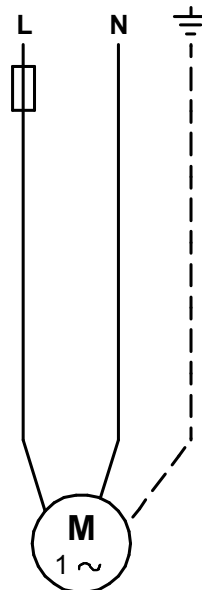
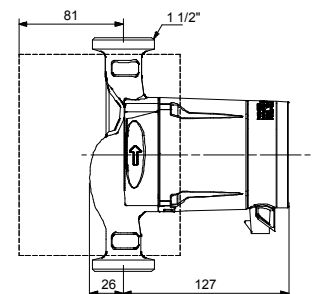
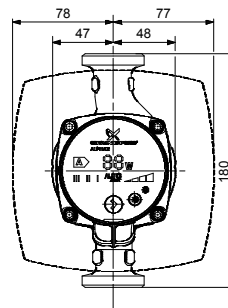
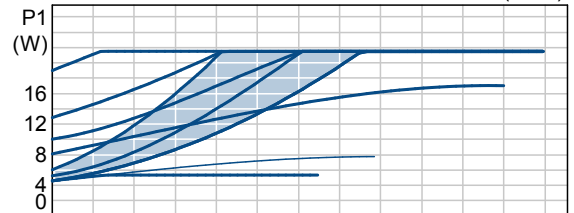
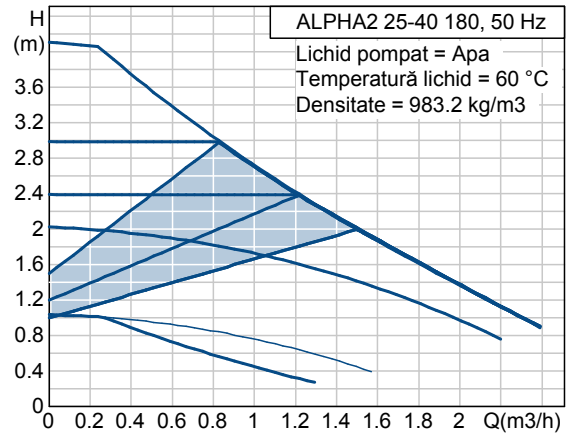
| Poziție | Cant. | Descriere | Preț unitar |
|---------|-------|---|-------------|
| | 1 | <p>ALPHA2 25-40 180</p>  <div data-bbox="730 190 1326 353" style="border: 1px solid red; padding: 5px;"> <p>CALOR SRL Str. Progresului nr. 30-40, sector 5, Bucuresti tel: 021.411.44.44, fax: 021.411.36.14 www.calorserv.ro - www.calor.ro</p> </div> <p>Notă! Poza de produs poate diferi de produsul actual</p> <p>Nr. Produs: 95047500</p> <p>GRUNDFOS ALPHA2 The next generation of A-labelled small circulators</p> <p>ALPHA2 is the latest and most innovative member of the Grundfos family of high-quality circulators.</p> <p>With ALPHA2, you can stop worrying about complicated pump settings. Simply install the pump and leave it in the factory setting, AUTOADAPT. ALPHA2 will automatically analyse the heating system, find the optimum setting and continue to adjust its operation to changes in demand. The result is optimum comfort and minimum energy consumption.</p> <p>In addition, ALPHA2 is extremely flexible, reliable, and much more compact than any other A-labelled circulator pump on the market.</p> <p>AUTOADAPT The factory setting, AUTOADAPT, analyses the heating system and automatically adjusts the pump setting to meet the heating demand. AUTOADAPT can be used in 80 % of all heating systems.</p> <p>Compact design The innovative design makes ALPHA2 the most compact Grundfos circulator available. With the electronics integrated in the pump housing, installation in very confined spaces is now possible.</p> <p>A-label The frequency converter, permanent-magnet technology, and compact stator place ALPHA2 highest on the energy label scheme. ALPHA2 will use up to 80 % less electrical energy than D-labelled circulators.</p> <p>ALPHA plug The much appreciated and very popular ALPHA plug is the only plug in the market that offers extremely simple cable connection.</p> <p>One-touch operation Intuitive one-touch operation enables simple setting.</p> <p>LED Display The easy-to-read LED display always shows the actual power consumption.</p> <p>Automatic Night SetBack The night setback function reduces power consumption to a minimum in boilers with power-saving features.</p> <p>Liquid:</p> | La cerere |

| Poziție | Cant. | Descriere | Preț unitar |
|---------|-------|--|-------------|
| | | <p>Gama temperaturii lichidului: 2 .. 110 °C</p> <p>Technical: Clasa TF: 110 Presiune de funcționare maximă: 10 bar Aprobări pe etichetă: VDE,GS,CE</p> <p>Materials: Corpul pompei (stator): Fontă EN-JL 1020 ASTM A48-25 B Rotor: Compozit, PP</p> <p>Instalație: Gama temperaturii ambientale: 0 .. 40 °C Presiune de funcționare maximă: 10 bar Racordarea pompei la instalație: G 1 1/2 Presiune maximă de funcționare: PN 10 Distanța dintre porturi: 180 mm</p> <p>Electrical data: Power input - P1: 5 .. 22 W Curent consumat maxim: 0.05 .. 0.19 A Frecvența rețelei electrice: 50 Hz Tensiune nominală: 1 x 230 V Grad de protecție (IEC 34-5): 42 Clasă de izolare (IEC 85): F</p> <p>Others: Greutate netă: 2.1 kg Greutate brută: 2.3 kg Volum de transport: 0.004 m3 Etichetă energie: A</p> | |

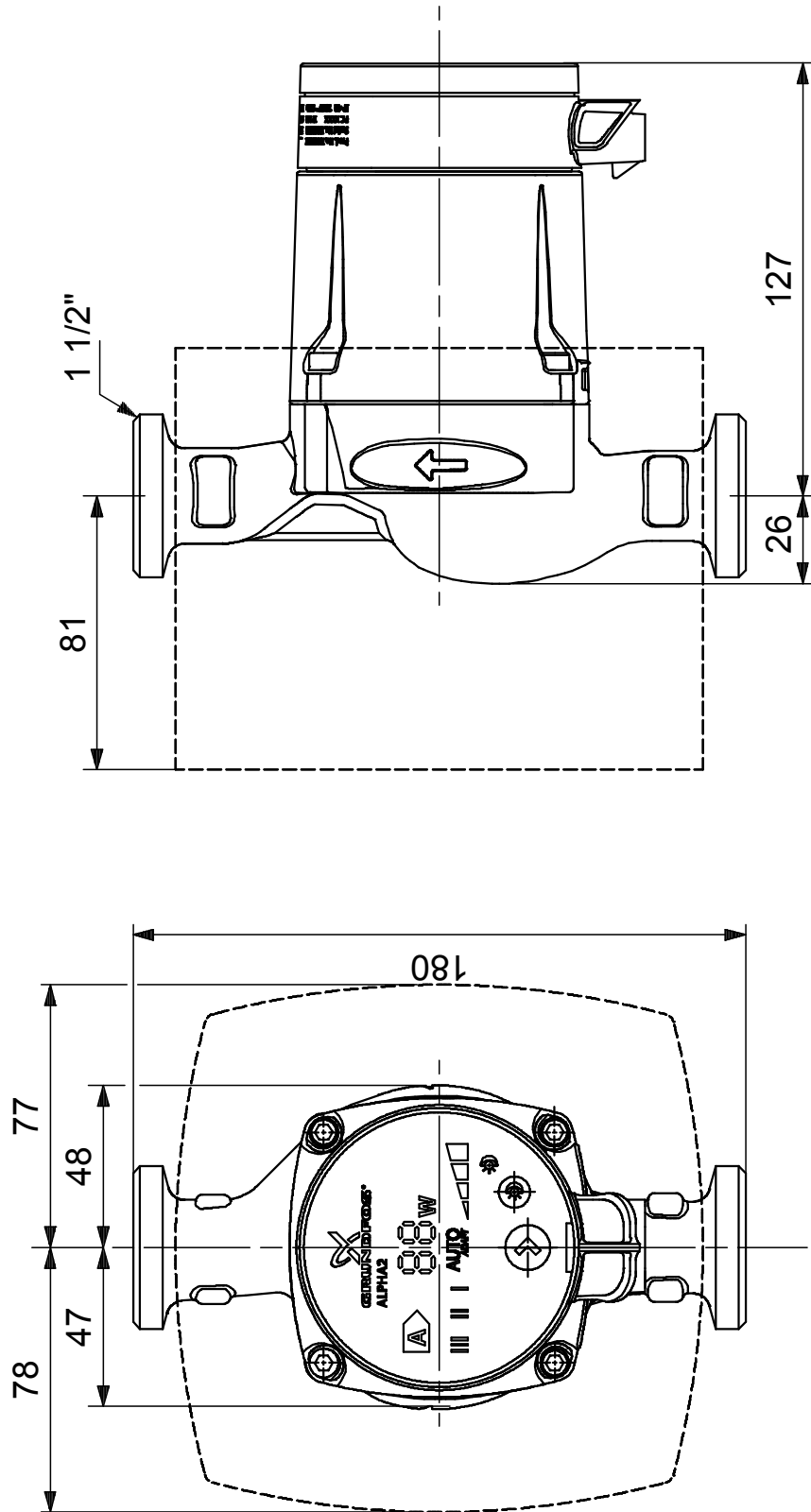
95047500 ALPHA2 25-40 180 50 Hz



| Descriere | Valori și tipuri |
|--|---|
| Nume produs: | ALPHA2 25-40 180 |
| Nr. produs: | 95047500 |
| Numărul EAN: | 5700837332415 |
| Technical: | |
| Debitul curent calculat: | 1.14 m ³ /h |
| Înălțimea de pompare rezultată pentru pompă: | 2.49 m |
| Înălțime de pompare max.: | 40 dm |
| Clasa TF: | 110 |
| Presiune de funcționare maximă | 10 bar |
| Aprobări pe etichetă: | VDE,GS,CE |
| Materials: | |
| Corpul pompei (stator): | Fontă EN-JL 1020 ASTM A48-25 B |
| Rotor: | Compozit, PP |
| Instalație: | |
| Gama temperaturii ambientale | 0 .. 40 °C |
| Presiune de funcționare maximă | 10 bar |
| Racordarea pompei la instalație: | G 1 1/2 |
| Presiune maximă de funcționare: | PN 10 |
| Distanța dintre porturi: | 180 mm |
| Liquid: | |
| Gama temperaturii lichidului | 2 .. 110 °C |
| Temp. lichid: | 60 °C |
| Densitate: | 983.2 kg/m ³ |
| Electrical data: | |
| Power input - P1 | 5 .. 22 W |
| Curent consumat maxim: | 0.05 .. 0.19 A |
| Frecvența rețelei electrice: | 50 Hz |
| Tensiune nominală: | 1 x 230 V |
| Grad de protecție (IEC 34-5): | 42 |
| Clasă de izolare (IEC 85): | F |
| Tip protecție motor încorporată: | FĂRĂ |
| Protecție termică: | ELEC |
| Controls: | |
| Automat noaptea: | funcționare redusă automată pe timp te noapte inclusă |
| Poziția cutiei de conexiuni: | 6H |
| Others: | |
| Greutate netă: | 2.1 kg |
| Greutate brută: | 2.3 kg |
| Volum de transport: | 0.004 m ³ |
| Etichetă energie: | A |

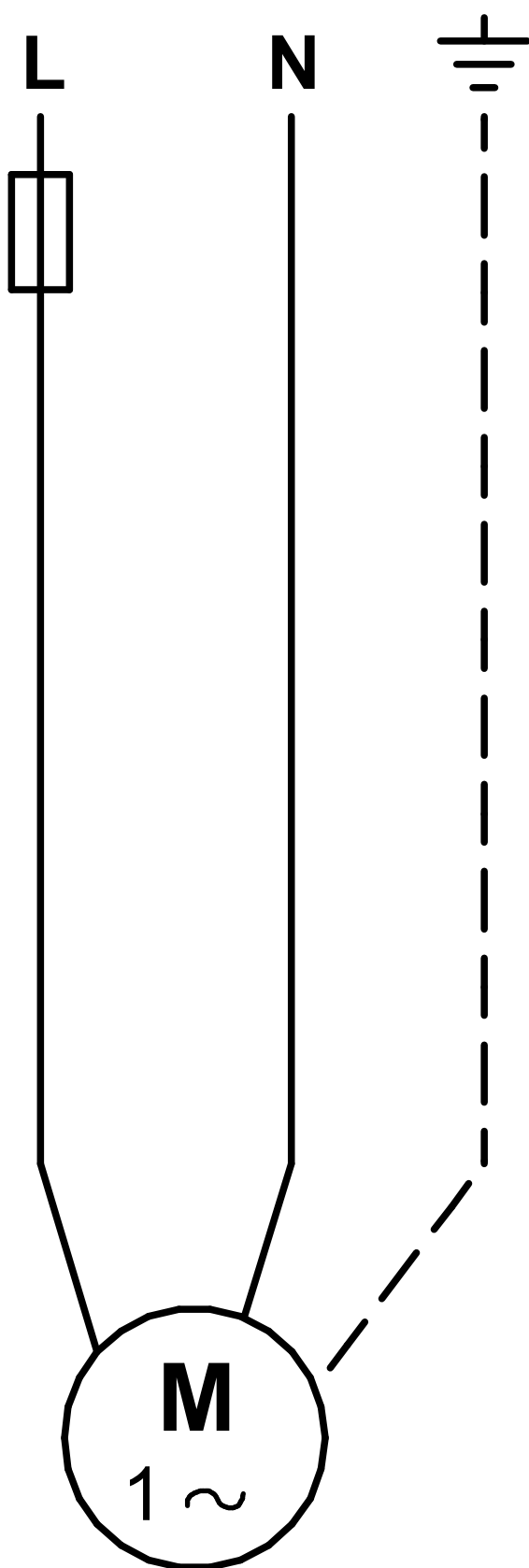


95047500 ALPHA2 25-40 180 50 Hz



Note! All units are in [mm] unless others are stated.
 Disclaimer: This simplified dimensional drawing does not show all details.

95047500 ALPHA2 25-40 180 50 Hz



Notă! Toate unitățile sunt în [mm] dacă nu altele sunt condițiile.

CALOR SRL

Str. Progresului nr. 30-40, sector 5,
Bucuresti

tel: 021.411.44.44, fax: 021.411.36.14

www.calorserv.ro - www.calor.ro