

SPLASHPROOF AXIAL EXTRACT FANS USED TO EXTRACT AIR EITHER DIRECTLY TO THE OUTSIDE OR INTO DUCTING UP TO 4m LONG

VORTICE® PUNTO RANGE



■ **For intermittent or continuous ventilation of bathrooms, toilets, kitchens or utility rooms in domestic or commercial properties.**

■ 82 models available with or without the option of automatic shutters, timer, pull cord, humidistat, electronic microprocessor and Passive infrared.

■ Motor with shielded poles, either with bronze or ball bearings, and with thermal cut-out.

■ The standard models can be speed regulated.

- IMQ data label ensures data and performance is third party certified.
- High airflow rate, low operating noise level and low power consumption due to the wing profile blades and motor support.
- IPX4 splashproof protection on all models.
- Motor support and grille made of anti-UV ABS.
- Available in three outlet sizes: Ø 100, 120 and 150 mm.
- Conforms to the following standards: CEI EN 60335-2-80 (Part 2: Particular requirements for fans), CEI EN 60529 (Code IP) and CEI 107-53/1986.

Design: F. Trabucco & Associates

Accessories

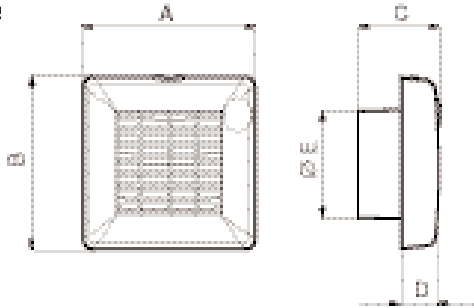
(description and data on page 23)

Wiring diagrams shown on page XXVII.



- ① Installation showing extract directly to the outside.
- ② Ceiling installation on up to 4m duct.
- ③ Through the wall installation with wall sleeve and grille.
- ④ Window installation with standard window kit.

Dimension:

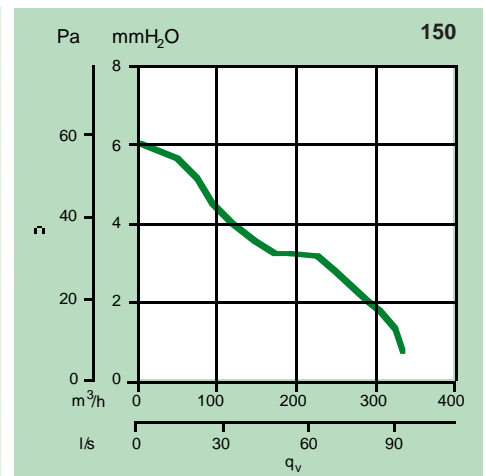
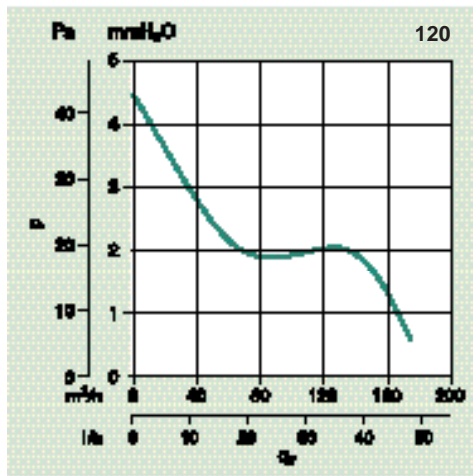
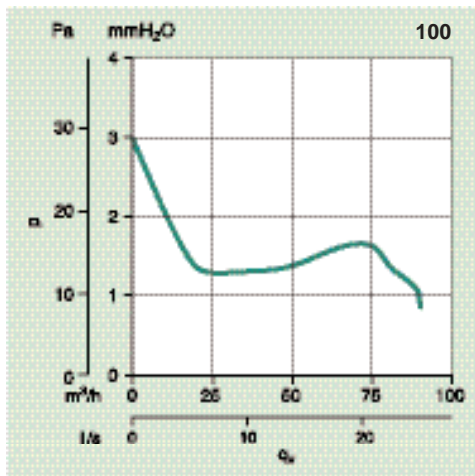


	A	B	C	D	Ø E
M 100/4"	159	160	100	47	99
M 120/5"	179	181	110	47	119
M 150/6"	214	215	117	47	156

Product	V ~ 50 Hz	W	A	Rpm	Delivery		P max		Lp dB(A) 3 m	Approvals	kg	Insulation	IP	°C max
					m ³ /h	l/s	mm H ₂ O	Pa						
 M 100/4"	230-240	18	0.1	2300	90	25	3	29	37.5		0.6	cl.II	X4	50
 M 120/5"	230-240	20	0.12	2100	175	48.6	4.5	44	39.5		0.8	cl.II	X4	50
 M 150/6"	230-240	30	0.15	2100	335	93.1	6	59	46		1.1	cl.II	X4	50

SPLASHPROOF AXIAL EXTRACT FANS USED TO EXTRACT AIR EITHER DIRECTLY TO THE OUTSIDE OR INTO DUCTING UP TO 4m LONG

Pressure/performance curves



Supply and install a Punto domestic axial extract fan (with or without automatic shutters), for installation in wall, window or ceiling as manufactured exclusively by Vortice only for Vortice. The fan should have a performance in excess of the requirements of the Building Regulations (Document F), even when installed with up to 4 m x (100mm, 120mm and 150mm diameters to suit the three model sizes) of flexible aluminium ducting with 2 number 90 degree bends. The requirements are 15l/s for Bathrooms/Toilets – 30 l/s for Utilities and 60 l/s for Kitchens (model with a 15 minute overrun timer for internal rooms). It should be tested and certified as IPX4 (splashproof) with all performance data third party IMQ (BEAB recognised equivalent) verified. The fan should be made from anti-UV ABS plastic and all components and packaging to be 100% recyclable. The internal cover should be of a snap fix design. The motor should be either a bronze bush or a stainless steel ball bearing, shielded pole motor (30,000-hour guarantee), be capable of operating at an ambient temperature up to 50°C and include a thermal cut out device. Control options should include: Speed control (using an optional controller), Pull cord, Timer, PIR (passive Infrared), T-HCS (humidity control system-timer) and MHC (microprocessor humidity control).

THE SPLASHPROOF VORTICE® PUNTO MODELS ARE AVAILABLE IN THE FOLLOWING VERSIONS:

STANDARD

LONG LIFE 30.000 h



AUTOMATIC

All models are manufactured with shielded poles and have bronze bearings for a long life

All models are manufactured with long-life ball-bearing motors which are guaranteed for 30,000 hours continuous, trouble-free operation.

The integral shutters positioned behind the front grille automatically open and close slowly when the unit is operated. The shutters are made from shockproof, anti-UV-treated, plastic.

THE VORTICE® PUNTO MODELS ARE AVAILABLE IN THE FOLLOWING OPTIONS:

TIMER

TIMER

The timer comes on when the light is switched on. When the light is turned off, the unit continues to operate for 3 to 20 minutes, depending on the timer setting.

off, the unit continues to operate for 3 to 20 minutes, depending on the timer setting.

T-HCS

Humidity Control System - Timer

T-HCS VERSION

The unit turns on when relative humidity exceeds 65% and it turns back off when the RH drops back to 65%. When the light is switched off, the unit will continue to run from between 3 to 20 minutes depending on the timer setting.

back off when the RH drops back to 65%. When the light is switched off, the unit will continue to run from between 3 to 20 minutes depending on the timer setting.

PULLCORD

PULL CORD

The unit is switched on by pulling the insulated pull cord.

MHC

Microprocessor Humidity Control

MHC VERSION

This model has the latest electronic micro-chip technology which provides high accuracy and continuous monitoring of both temperature and humidity. Intelligent self-adjusting switch-point which helps eliminate condensation at source, reduces health hazards and call backs.

high accuracy and continuous monitoring of both temperature and humidity. Intelligent self-adjusting switch-point which helps eliminate condensation at source, reduces health hazards and call backs.

PIR

Passive Infrared

INTEGRAL "PIR" SENSOR

The unit turns on a few seconds after the person has entered the room

(sensor is located in an inclined position to increase sensitivity), and continues to operate during the person's presence. When the person leaves the room, the unit will continue to run from between 3 to 20 minutes depending on the timer setting.

12 V

Power Supply Unit

12 V MODELS

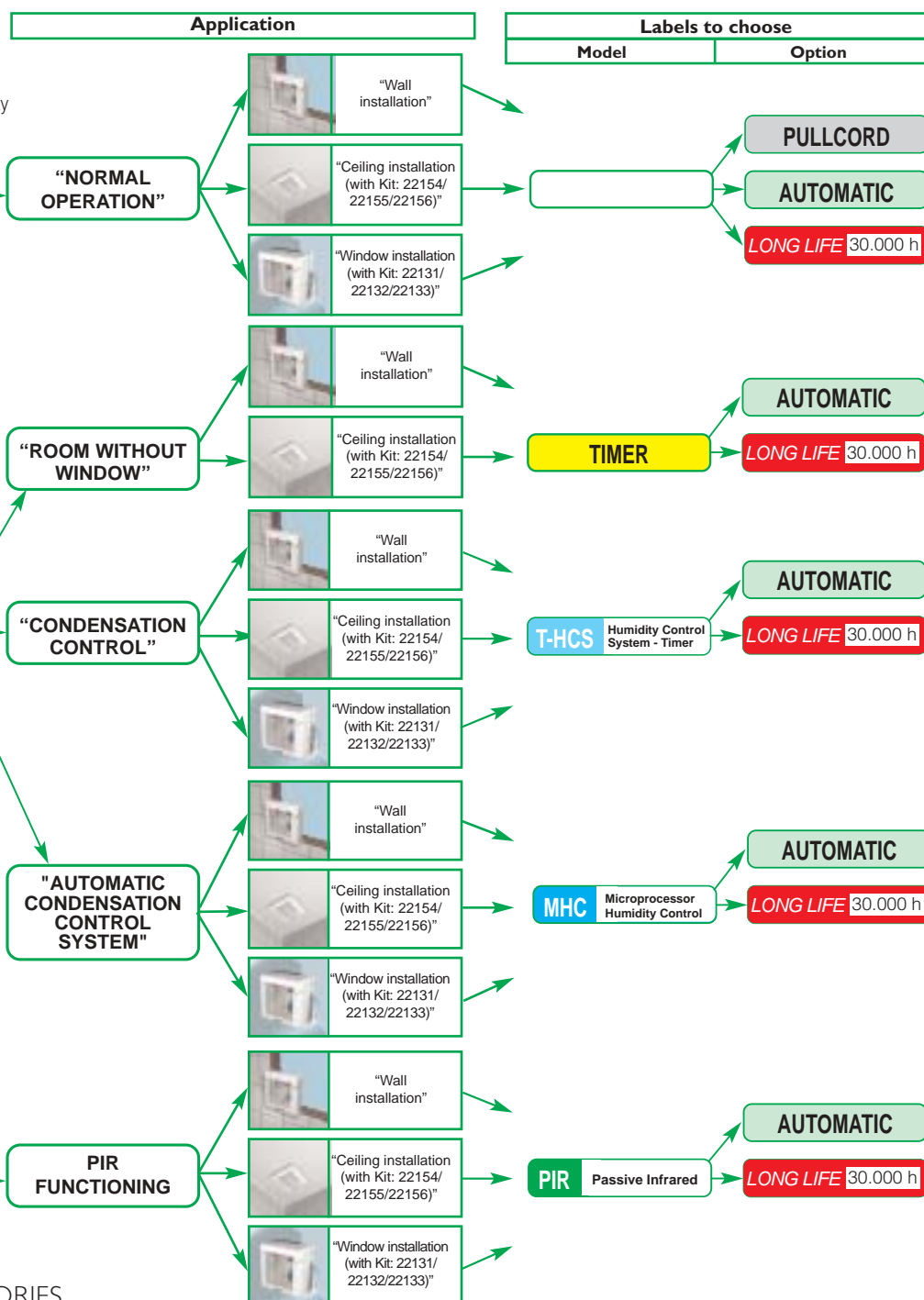
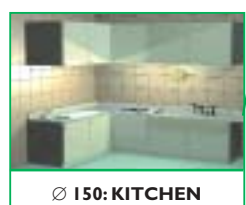
A power supply unit is needed wherever the use of low-voltage

equipment is required. The two available low-voltage fans - one with and one without automatic shutter - can be used in combination with any of the power supply units.

SPLASHPROOF AXIAL EXTRACT FANS USED TO EXTRACT AIR EITHER DIRECTLY TO THE OUTSIDE OR INTO DUCTING UP TO 4m LONG

TYPE OF ROOM

Note: The ceiling kit is to preserve IPX4 integrity



VORTICE® PUNTO ACCESSORIES

Model	Code	Suitable for use with
Fixed grille	22010	11221 - 11231 - 11611 - 11646 - 11683 - 11222 - 11232 - 11637 - 11684 - And for all products Ø 10
	22020	11321 - 11331 - 11721 - 11746 - 11783 - 11421 - 11431 - 11808 - 11856 - 11883 - 11332 - And for all products Ø 12/15 11737 - 11747 - 11784 - 11422 - 11432 - 11837 - 11857 - 11884
Gravity type grille	22300	11201 - 11211 - 11601 - 11641 - 11681 - 11202 - 11212 - 11642 - 11682 - 11602 - 11626 - 11627
	22330	11301 - 11311 - 11741 - 11781 - 11302 - 11312 - 11782 - 11742 - 11701 - 11702 - 11726 - 11727
	22360	11401 - 11411 - 11801 - 11851 - 11881 - 11412 - 11853 - 11882 - 11402 - 11802 - 11826 - 11827
Grille kit	22140	11100 - 11101 - 11110 - 11111
	22141	11102 - 11103 - 11116
	22142	11104 - 11105 - 11117
	22143	11110 - 11111
SCNR electronic speed controller C 1.5 electronic speed controller	12912*	11201 - 11202 - 11301 - 11302 - 11401 - 11402
	12966	
SCNRB recessed electronic speed controller	12971	11201 - 11202 - 11301 - 11302 - 11401 - 11402
Window kit	22131	11221 - 11231 - 11611 - 11646 - 11683 - 11222 - 11232 - 11637 - 11684
	22132	11321 - 11331 - 11721 - 11746 - 11783 - 11322 - 11332 - 11737 - 11747 - 11784
	22133	11421 - 11431 - 11808 - 11856 - 11883 - 11442 - 11432 - 11837 - 11857 - 11884
Ceiling kit	22154	11201 - 11211 - 11601 - 11681 - 11221 - 11231 - 11611 - 11683 - 11202 - 11212 - 11682 - 11222 - 11232 - 11637 - 11684
	22155	11301 - 11311 - 11701 - 11781 - 11321 - 11331 - 11721 - 11783 - 11302 - 11312 - 11782 - 11322 - 11332 - 11737 - 11784
	22156	11401 - 11411 - 11801 - 11881 - 11421 - 11431 - 11808 - 11883 - 11402 - 11412 - 11882 - 11422 - 11432 - 11837 - 11884

* Upon stock depletion

SPLASHPROOF AXIAL EXTRACT FANS USED TO EXTRACT AIR EITHER DIRECTLY TO THE OUTSIDE OR INTO DUCTING UP TO 4m LONG



BATHROOM, SHOWER, TOILET

11201	M 100/4"	11636	M 100/4" A MHC	11232	M 100/4" AT LL	11203 + 22157	M 100/4" 12 V T HCS
11641	M 100/4" P	11202	M 100/4" LL	11684	M 100/4" A PIR LL	11203 + 22153	M 100/4" 12 V MHC
11211	M 100/4" T	11642	M 100/4" P LL	11601	M 100/4" T HCS	11223 + 22150	M 100/4" 12 V A
11681	M 100/4" PIR	11212	M 100/4" T LL	11611	M 100/4" AT HCS	11223 + 22152	M 100/4" 12 V AP
11626	M 100/4" MHC	11682	M 100/4" PIR LL	11612	M 100/4" AT HCS LL	11223 + 22151	M 100/4" 12 V AT
11221	M 100/4" A	11602	M 100/4" T HCS LL	11637	M 100/4" A MHC LL	11223 + 22157	M 100/4" 12 V AT HCS
11646	M 100/4" AP	11627	M 100/4" MHC LL	11203 + 22150	M 100/4" 12 V	11223 + 22153	M 100/4" 12 V A MHC
11231	M 100/4" AT	11222	M 100/4" A LL	11203 + 22152	M 100/4" 12 V P		-
11683	M 100/4" A PIR	11647	M 100/4" AP LL	11203 + 22151	M 100/4" 12 V T		-



UTILITY ROOM

11301	M 120/5"	11331	M 120/5" AT	11322	M 120/5" A LL	11737	M 120/5" A MHC LL
11741	M 120/5" P	11783	M 120/5" A PIR	11747	M 120/5" AP LL	11702	M 120/5" T HCS LL
11311	M 120/5" T	11302	M 120/5" LL	11332	M 120/5" AT LL	11722	M 120/5" AT HCS LL
11781	M 120/5" PIR	11742	M 120/5" P LL	11784	M 120/5" A PIR LL	11726	M 120/5" MHC
11321	M 120/5" A	11312	M 120/5" T LL	11701	M 120/5" T HCS	11736	M 120/5" A MHC
11746	M 120/5" AP	11782	M 120/5" PIR LL	11721	M 120/5" AT HCS	11727	M 120/5" MHC LL



KITCHEN

11401	M 150/6"	11431	M 150/6" AT	11857	M 150/6" AP LL	11837	M 150/6" A MHC LL
11851	M 150/6" P	11883	M 150/6" A PIR	11432	M 150/6" AT LL	11802	M 150/6" T HCS LL
11411	M 150/6" T	11402	M 150/6" LL	11882	M 150/6" PIR LL	11809	M 150/6" AT HCS LL
11881	M 150/6" PIR	11853	M 150/6" P LL	11884	M 150/6" A PIR LL	11826	M 150/6" MHC
11421	M 150/6" A	11412	M 150/6" T LL	11801	M 150/6" T HCS	11836	M 150/6" A MHC
11856	M 150/6" AP	11422	M 150/6" A LL	11808	M 150/6" AT HCS	11827	M 150/6" MHC LL