



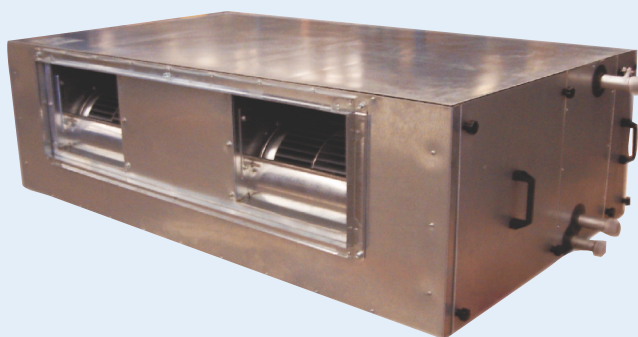
HIGH VOLUME/HIGH STATIC DUCT TYPE FAN COIL UNITS COOLING/HEATING

TERMINAL UNIT

COOLING CAPACITY: 7.44 kW - 48.9 kW

HEATING CAPACITY: 8.2 kW - 54.6 kW

AIR VOLUME: 1.250m³/h - 8.350m³/h



Interklima high volume/high static duct type Fan Coils are the ideal solution for cooling/heating applications. They are available in 2 versions (single fan/double fan) and a total of 8 models with nominal capacities ranging from 7.44 kW to 48.9 kw in cooling and 8.2kw - 54.6kw in heating depending on the external static pressure and air volumes from 1.250m³/h to 8.350m³/h.

This series is ideal in combination with Interklima air cooled water chillers or heat pumps for air conditioning offices, shops or any other commercial application, where floor and wall space is needed for fittings and furniture, allowing various air flow pattern flexibility through ducts according to the room shape and layout.

Features

- Easy access to all the components for maintenance
- High external static pressure availability
- RAL9002 powder polyester salt spray tested coating for external surfaces available upon request
- The panels are of double skin type using hot dip galvanized steel with in between thermal and sound insulation of factory injected polyurathane 25mm thick.
- Centrifugal type fans with double width double inlet and forward curved blades.
- Direct driven motors
- Standard G2-G3 air filter.
- Low height (458-662mm)
- Insulated drain pan.
- Low operating noise levels
- Multiple speed fan motor
- A wide selection of optional accessories like additional water heating coil, aluminum filter, eliminator, belt driven

Technical specifications

Model		DA-107	DA-109	DA-110	DA-112	DA-207	DA-209	DA-210	DA-212
Fan type		DIDW							
Fan qty		1	1	1	1	2	2	2	2
Nominal Airflow (Hi Speed)	m³/h	1.250	1.460	2.220	3.800	2.500	3.380	4.970	8.350
Available external static pressure	Pa	50	65	90	200	70	55	80	200
Heat exchanger		Copper tube with corrugated aluminum fins							
Total cooling capacity	kW	7,44	8,69	13,55	23,17	16,25	20,50	32,36	48,90
Sensible cooling capacity	kW	5,30	6,18	9,47	16,20	11,25	14,40	22,20	35,00
Water flow rate (cooling)	l/h	1.277	1.492	2.326	3.978	2.789	3.518	5.555	8.393
Water pressure drop (cooling)	kPa	14	14	30	24	13	15	33	6
Heating capacity	kW	8,20	9,58	14,85	25,40	17,10	22,50	33,50	54,60
Water flow rate (heating)	l/h	1.425	1.664	2.580	4.417	2.970	3.900	5.815	9.492
Water pressure drop (heating)	kPa	17	17	34	27	14	17	34	7
Power supply	V/ph/Hz)	230/1/50							
High speed power input	W	290	600	620	1.700	580	1.200	1.240	3.400
Maximum operating current	A	1,3	2,8	2,9	7,8	2,6	5,6	5,8	15,6
Fan speeds		3	3	3	1	3	3	3	1
Casing Dimensions	Length	mm	790	943	943	1.096	790	943	1.096
	Width	mm	662	662	815	968	1.274	1.274	1.580
	Height	mm	458	458	509	662	458	458	509
Weight	kg	55	60	75	110	100	110	130	185

Notes

Cooling capacity is based on the following: water temp 7°C(inlet) / 12°C(outlet) EDB is based on 27°C, EWB 19,5°C (4R coil)

Heating capacity is based on the following: EDB 20°C, water inlet temp, 45°C and outlet 40°C (4R coil)

Optional accessories:

3R/6R cooling coils, 1/2/3R Heating coils, aluminium filter, belt driven motors

Unit dimensions with optional accessories may change the length of the unit consult the manufacturer.

Specifications subject to change without notice



Interklima units comply with the European regulations that guarantee the safety of the product 70th



Products are manufactured in ISO 9001 certified factories. ISO9001 pertains to quality assurance regarding design, development, manufacturing and installation of products as well as to services related to the product



CALOR SRL
Str. Progresului nr. 30-40, sector 5, Bucuresti
tel: 021.411.44.44, fax: 021.411.36.14
www.calorserv.ro - www.calor.ro